



2 bedroom apartment

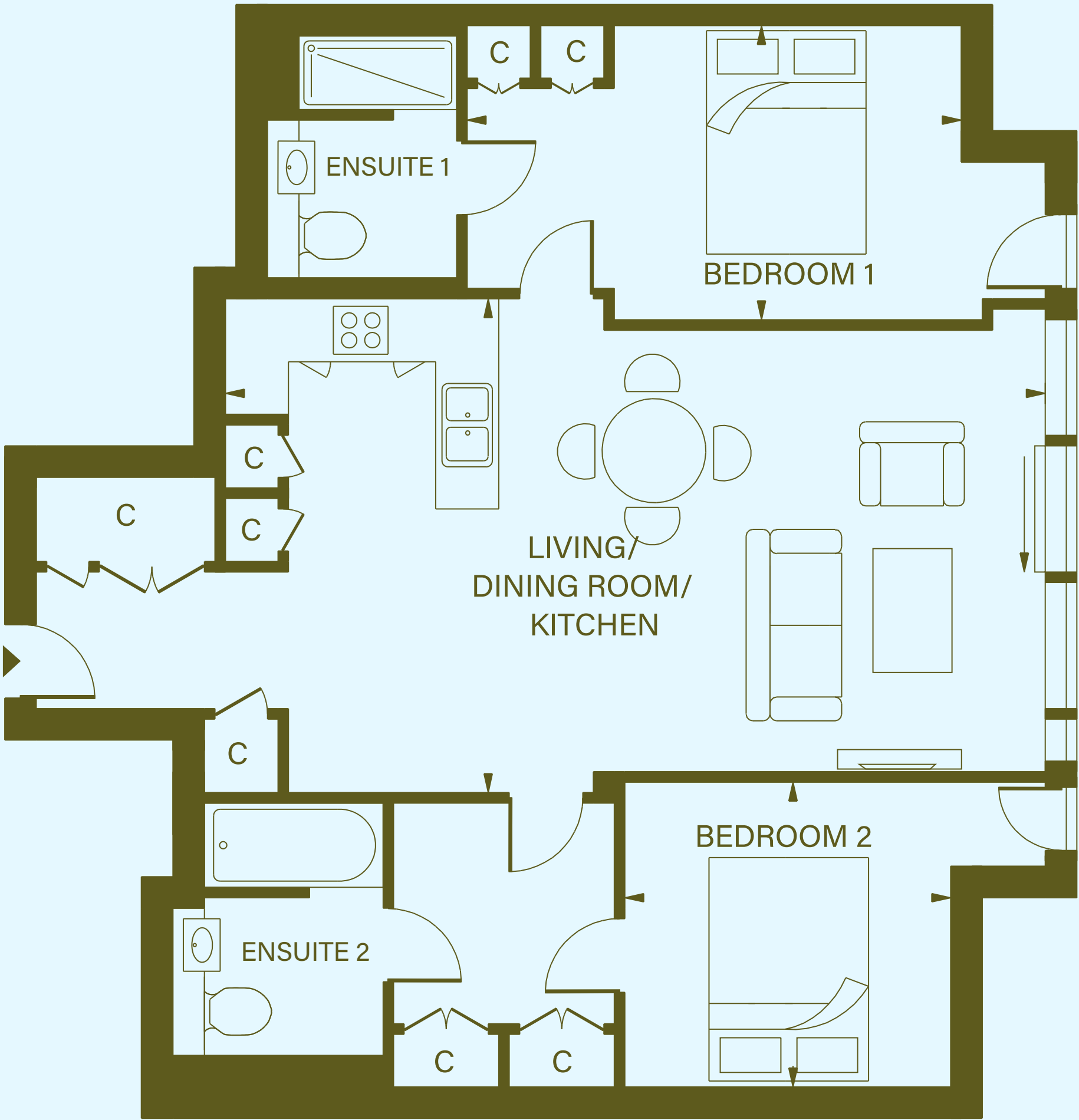
TYPE AT 02

Total Area850 sq ft

LIVING /DINING/ KITCHEN	25'6" x 15'6"
BEDROOM 1	15'6" x 9'3"
BEDROOM 2	10'3" x 9'6"
ENSUITE 1	7'6" x 5'9"
ENSUITE 2	7'9" x 6'9"

KEY
C – Cupboard

Disclaimer: Please note floor plans are for marketing purposes only and measurements may be approximate.



a place to call home

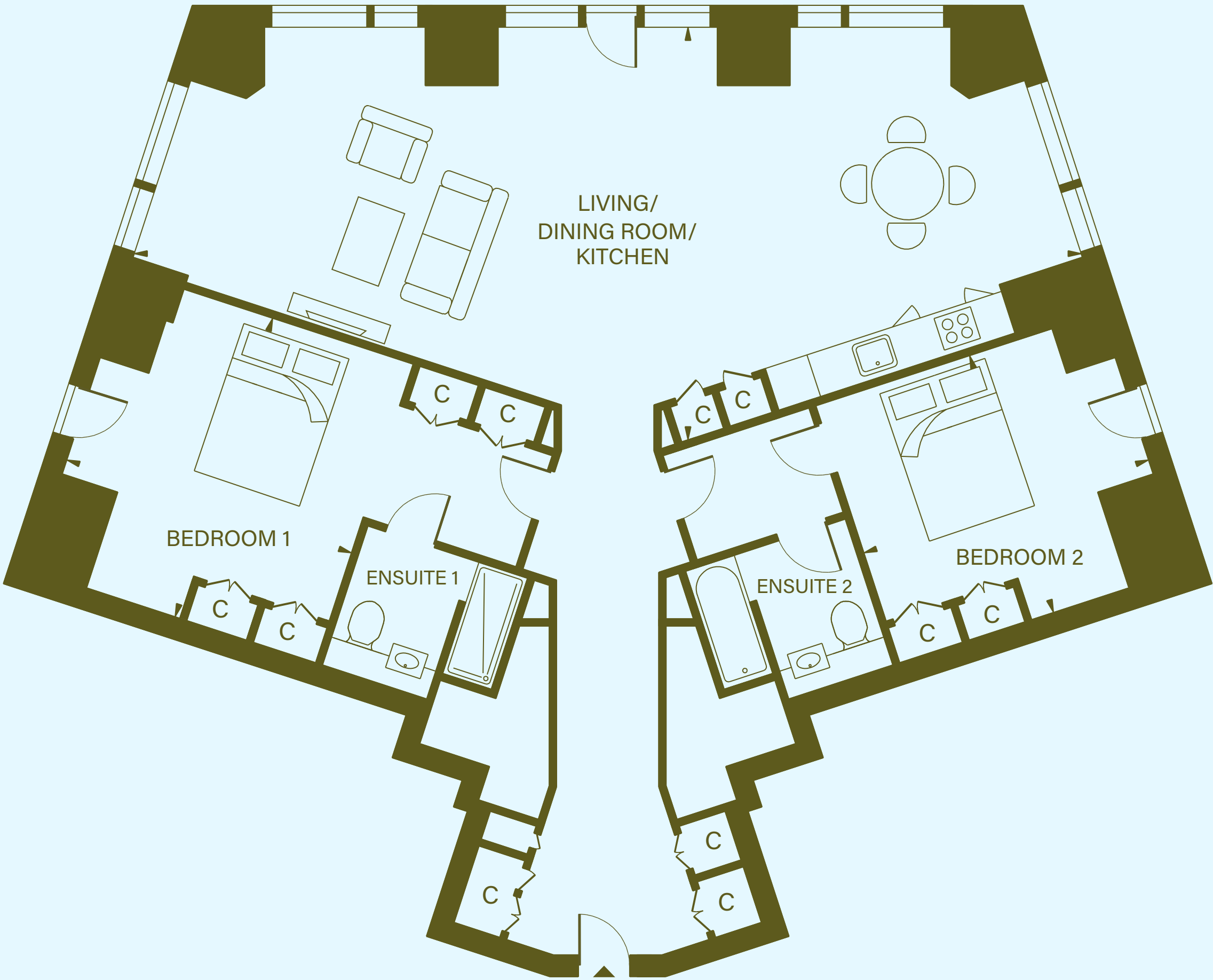


2 bedroom apartment

TYPE AT 05

Total Area1,275 sq ft

LIVING /DINING/ KITCHEN	42'8" x 18'4"
BEDROOM 1	14'2" x 13'4"
BEDROOM 2	13'3" x 11'10"
ENSUITE 1	7'8" x 6'8"
ENSUITE 2	7'8" x 6'8"



KEY
C – Cupboard

Disclaimer: Please note floor plans are for marketing purposes only and measurements may be approximate.

a place to call home



2 bedroom apartment

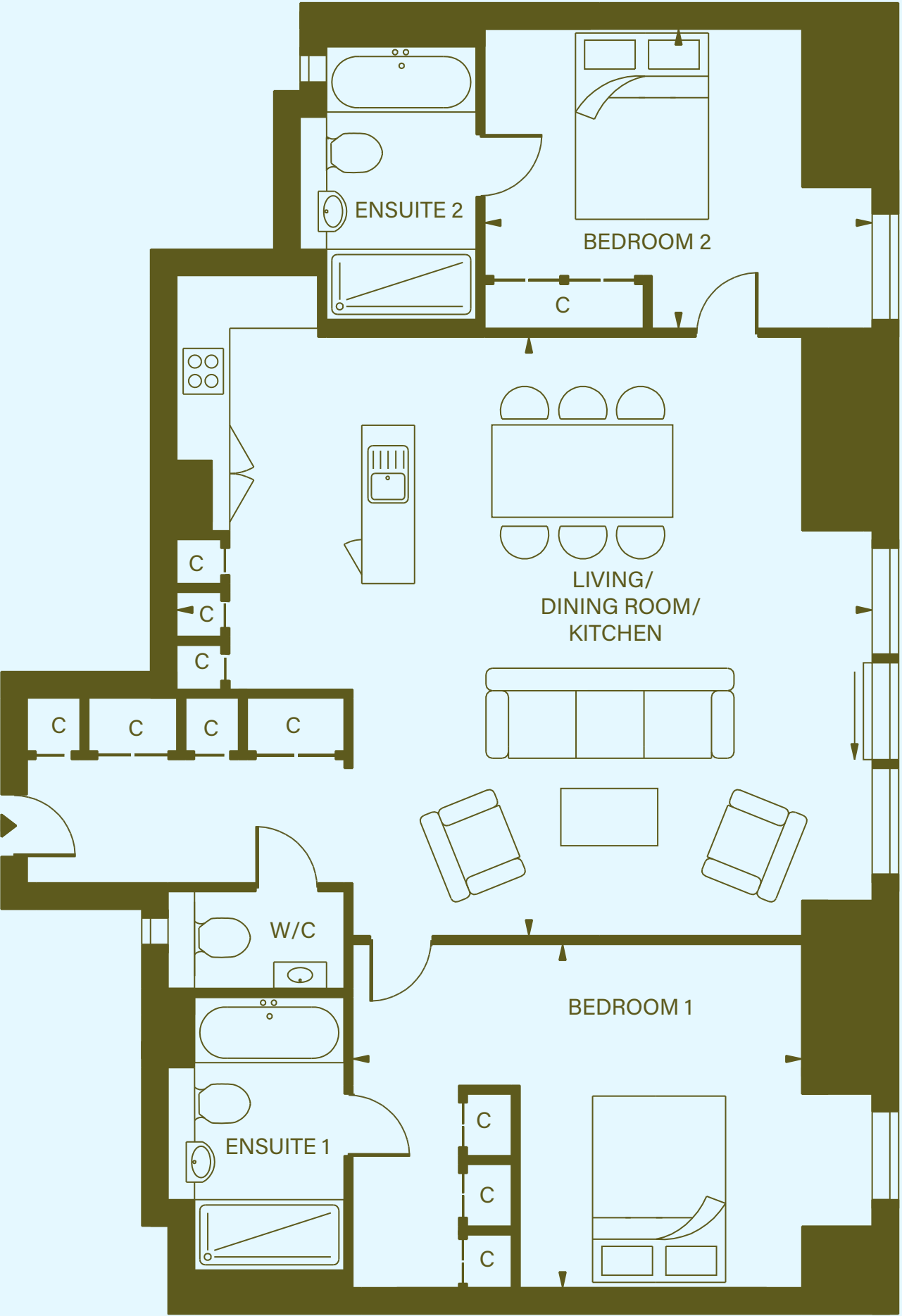
TYPE AT 06

Total Area1,142 sq.ft

LIVING /DINING/ KITCHEN	25'11" x 22'6"
BEDROOM 1	16'9" x 12'9"
BEDROOM 2	14'6" x 11'3"
ENSUITE 1	10'3" x 6'6"
ENSUITE 2	10'3" x 6'9"
W/C	6'6" x 3'6"

KEY
C – Cupboard

Disclaimer: Please note floor plans are for marketing purposes only and measurements may be approximate.



a place to call home



2 bedroom apartment

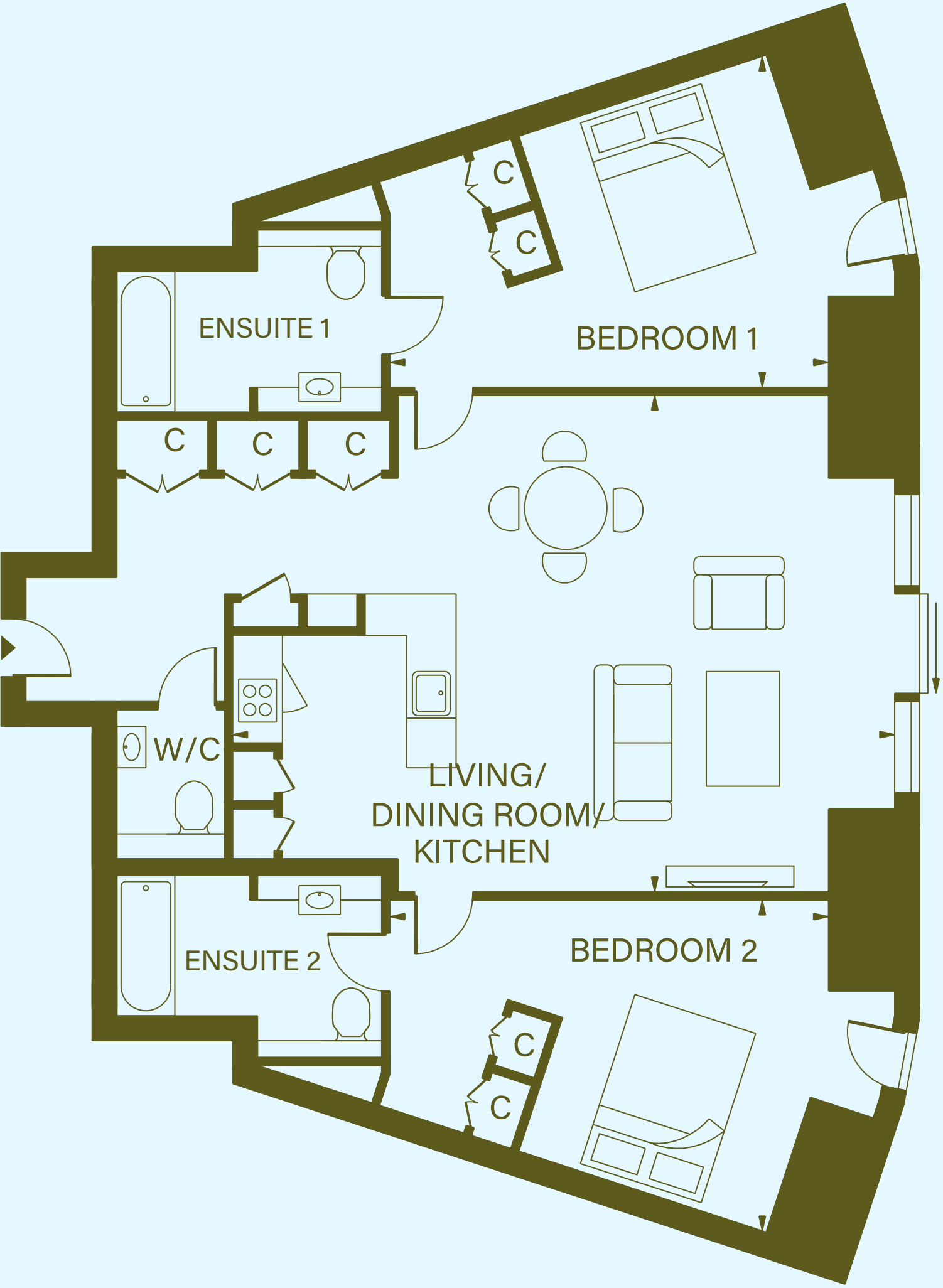
TYPE AT 13

Total Area1,134 sq ft

LIVING /DINING/ KITCHEN	26'3" x 19'7"
BEDROOM 1	17'6" x 13'1"
BEDROOM 2	17'6" x 13'1"
ENSUITE 1	10'3" x 7'3"
ENSUITE 2	10'3" x 7'6"
W/C	6' x 4'3"

KEY
C – Cupboard

Disclaimer: Please note floor plans are for marketing purposes only and measurements may be approximate.



a place to call home



2 bedroom apartment

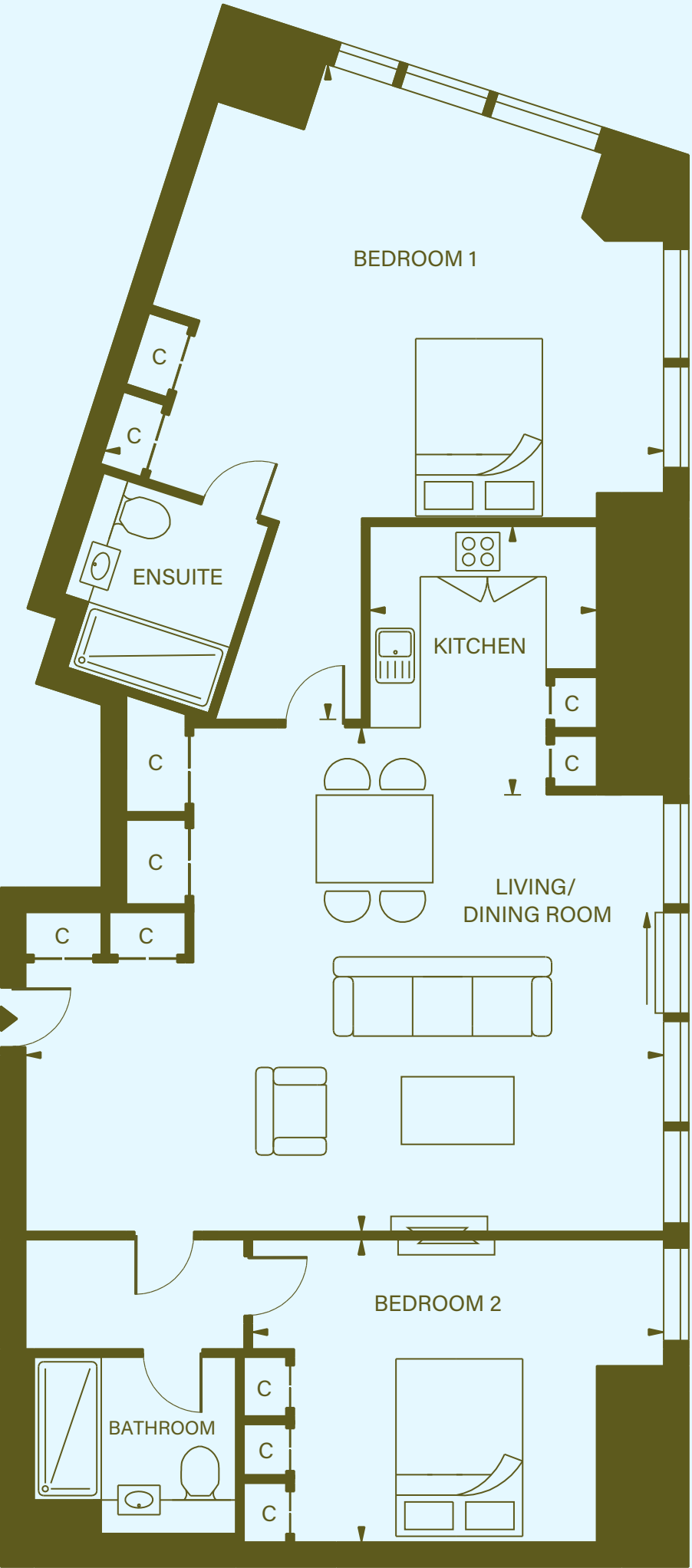
TYPE AT 15

Total Area1,164 sq ft

LIVING /DINING	24'8" x 19'3"
KITCHEN	10'6" x 8'8"
BEDROOM 1	25'7" x 21'8"
BEDROOM 2	16'1" x 11'6"
ENSUITE	7'7" x 6'6"
BATHROOM	7'8" x 6'11"

KEY
C – Cupboard

Disclaimer: Please note floor plans are for marketing purposes only and measurements may be approximate.



a place to call home