

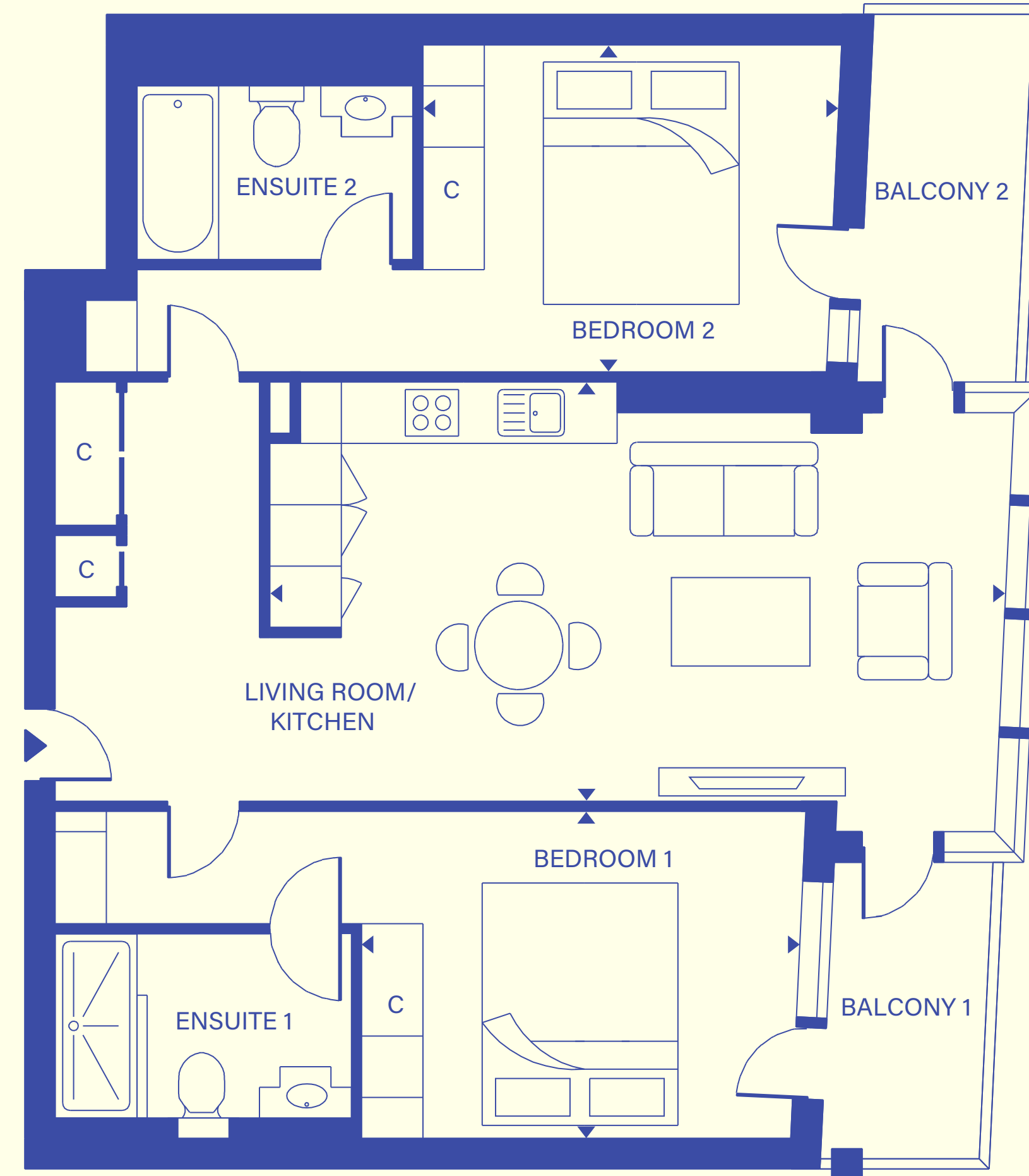


# 2 bedroom apartment

TYPE 01

*Total Area* *897 sq ft*

LIVING/ KITCHEN	23'6" x 13'6"
BEDROOM 1	14'1" x 10'6"
BEDROOM 2	13'6" x 10'6"
ENSUITE 1	9'6" x 6'
ENSUITE 2	8'9" x 5'6"
BALCONY 1	9'6" x 5'3"
BALCONY 2	11'9" x 5'



**KEY**  
C - Cupboard

Disclaimer: Please note floor plans are for marketing purposes only and measurements may be approximate.

*a place to call home*

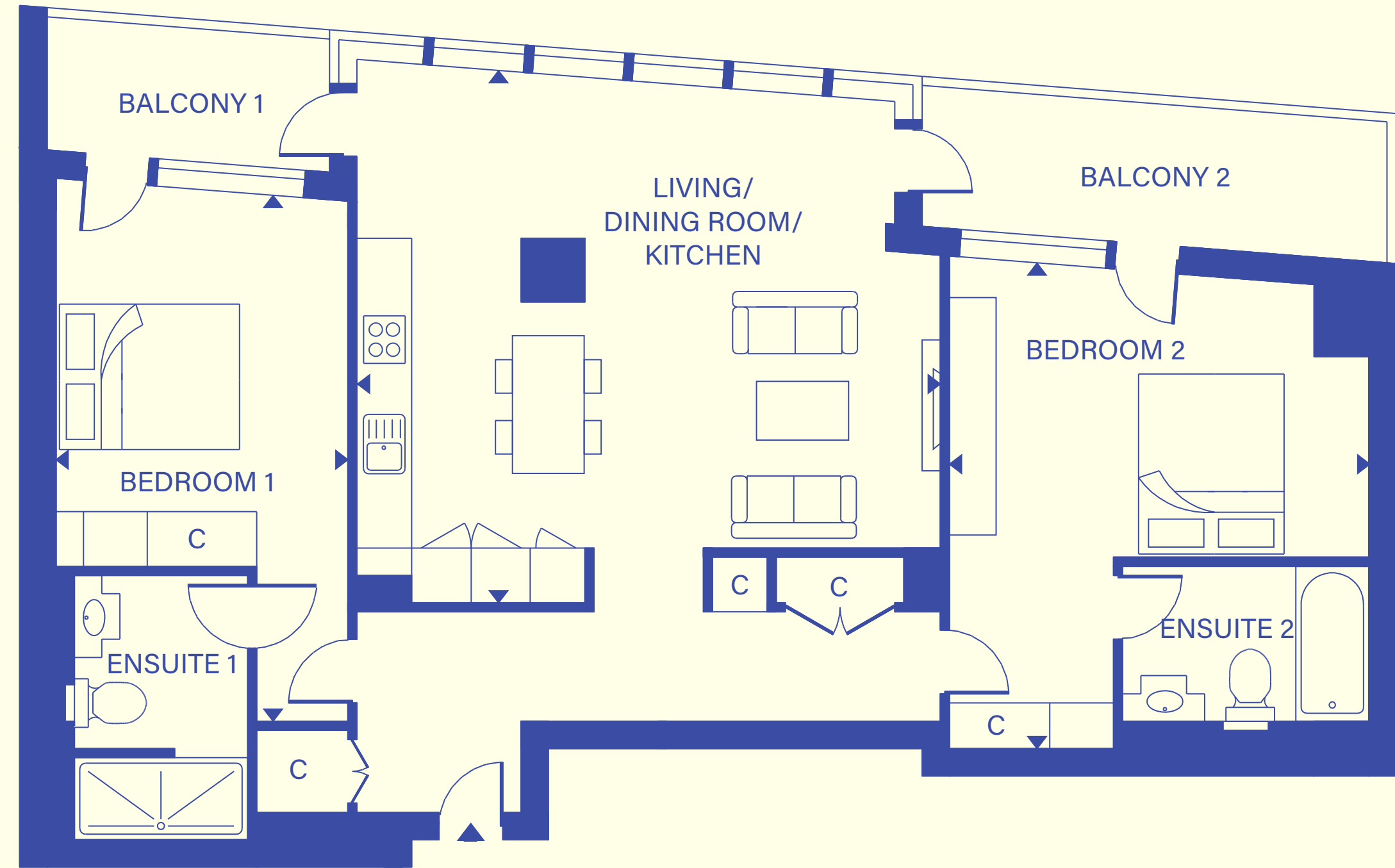


# 2 bedroom apartment

TYPE 02

*Total Area* *987 sq ft*

LIVING/ DINING ROOM/ KITCHEN	21' x 19'
BEDROOM 1	19' x 10'6"
BEDROOM 2	17'6" x 15'1"
ENSUITE 1	9'6" x 6'3"
ENSUITE 2	8'9" x 5'6"
BALCONY 1	10'3" x 5'
BALCONY 2	16'9" x 5'



**KEY**

C - Cupboard

Disclaimer: Please note floor plans are for marketing purposes only and measurements may be approximate.

*a place to call home*

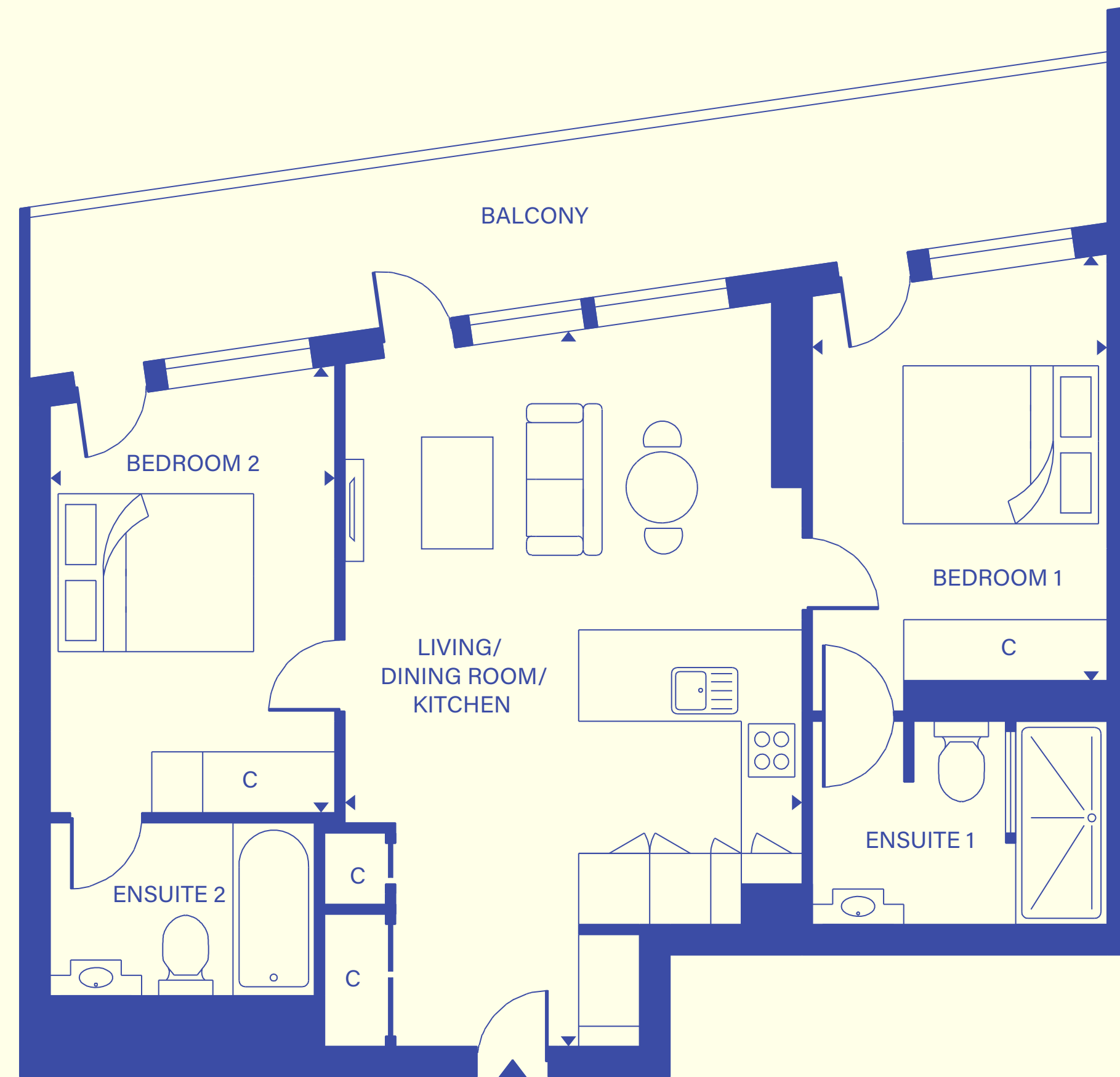


# 2 bedroom apartment

TYPE 05

Total Area 715 sq ft

LIVING/ DINING ROOM/ KITCHEN	23' x 14'9"
BEDROOM 1	13'9" x 9'6"
BEDROOM 2	14'6" x 9'3"
ENSUITE 1	9'6" x 6'6"
ENSUITE 2	8'6" x 5'6"
BALCONY	35'1" x 5'3"



**KEY**  
C - Cupboard

**Disclaimer:** Please note floor plans are for marketing purposes only and measurements may be approximate.

*a place to call home*

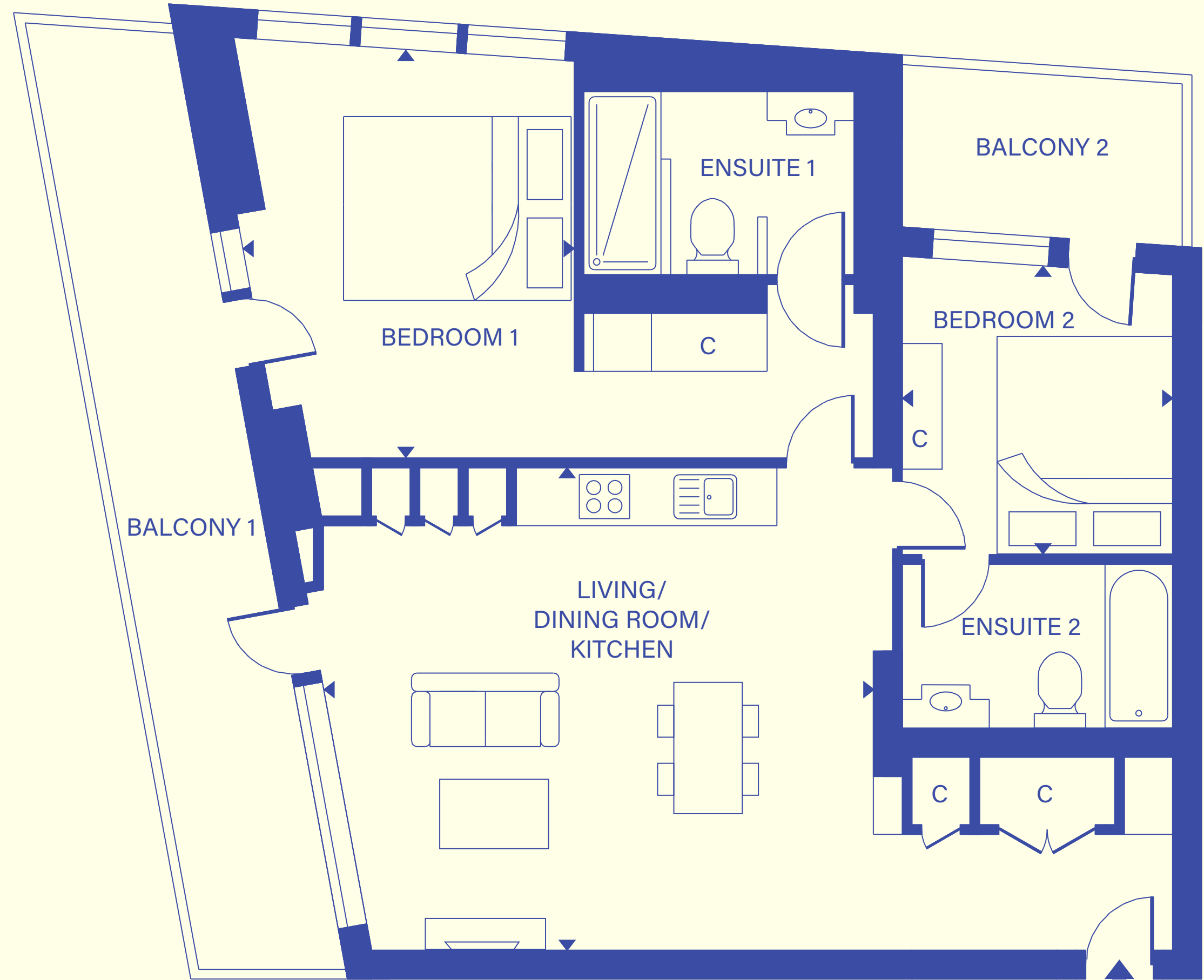


# 2 bedroom apartment

TYPE 12

*Total Area* *822 sq ft*

LIVING/ DINING ROOM/ KITCHEN	18'9" x 16'6"
BEDROOM 1	13'9" x 11'3"
BEDROOM 2	9'9" x 9'3"
ENSUITE 1	9'3" x 6'3"
ENSUITE 2	9'3" x 5'3"
BALCONY 1	32'6" x 5'
BALCONY 2	9'6" x 5'6"



**KEY**  
C - Cupboard

**Disclaimer:** Please note floor plans are for marketing purposes only and measurements may be approximate.

*a place to call home*

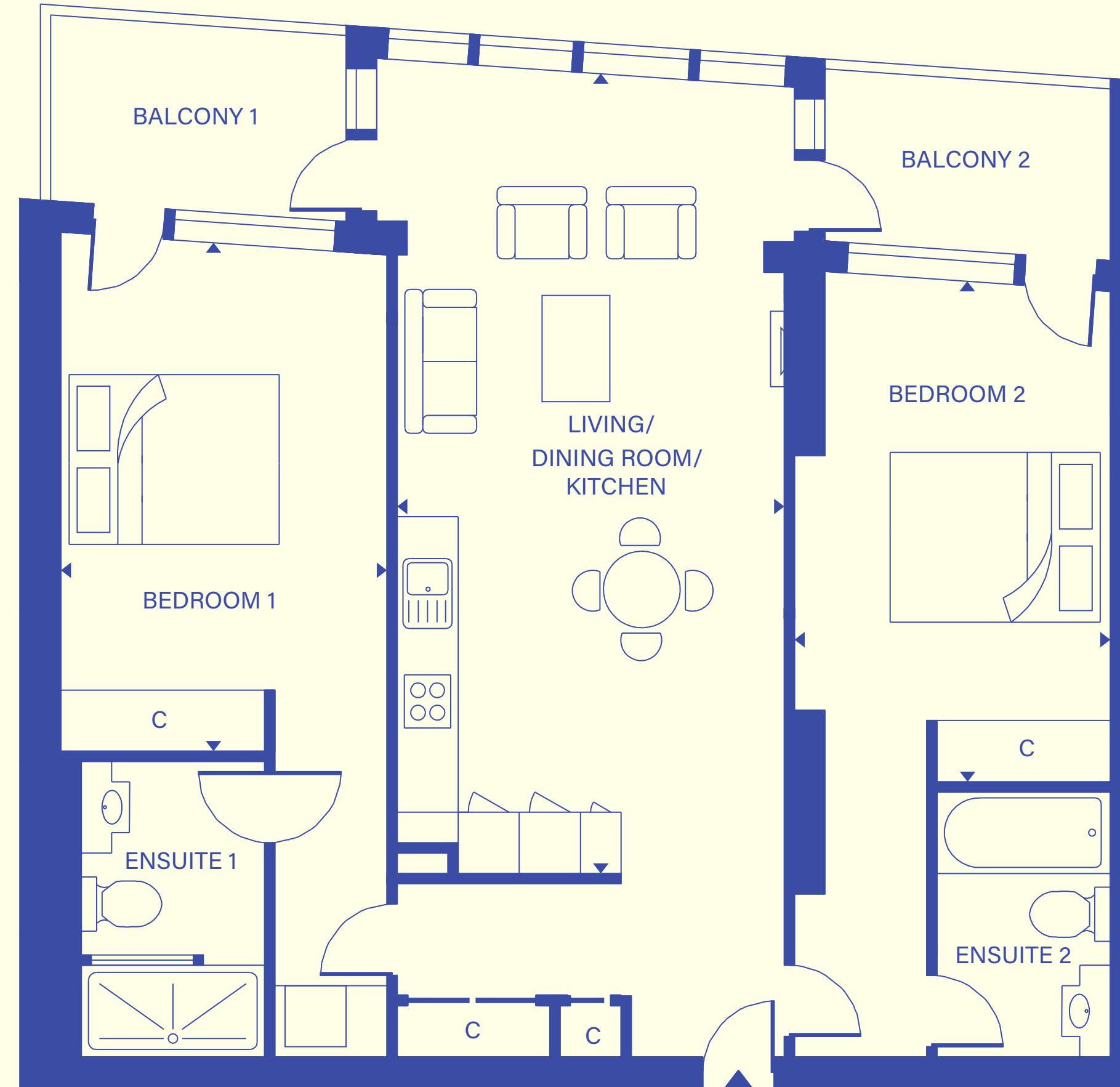


# 2 bedroom apartment

TYPE 13

Total Area *940 sq ft*

LIVING/ DINING ROOM/ KITCHEN	25'7" x 12'6"
BEDROOM 1	16'5" x 10'10"
BEDROOM 2	16'1" x 10'2"
ENSUITE 1	9'6" x 5'11"
ENSUITE 2	8'6" x 5'7"
BALCONY 1	9'6" x 5'11"
BALCONY 2	9'2" x 5'7"



**KEY**  
C - Cupboard

**Disclaimer:** Please note floor plans are for marketing purposes only and measurements may be approximate.

*a place to call home*

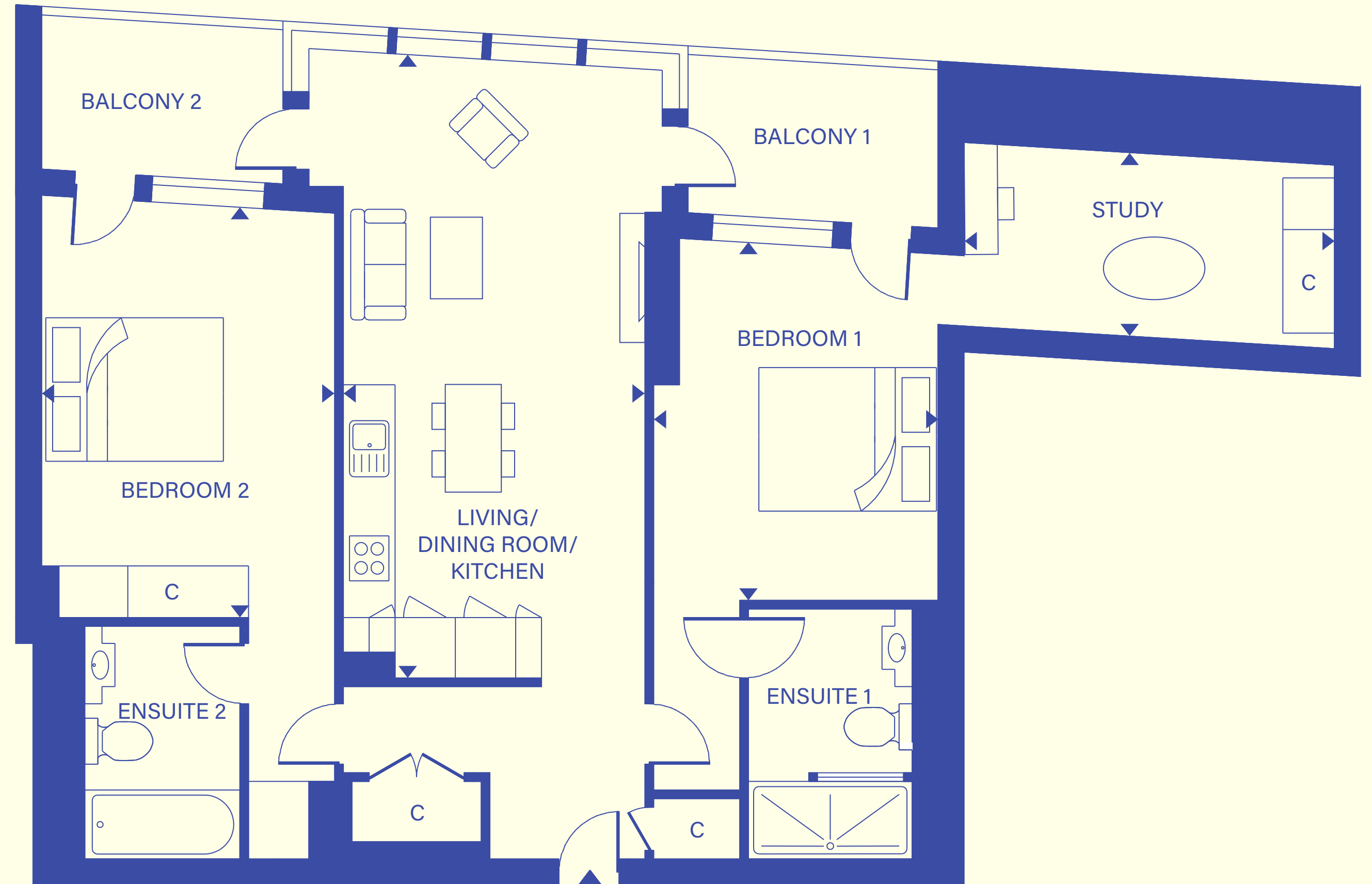


# 2 bedroom apartment

TYPE 14

Total Area 979 sq ft

LIVING/ DINING ROOM/ KITCHEN	23'6" x 11'6"
BEDROOM 1	13'6" x 10'9"
BEDROOM 2	15'6" x 11'3"
ENSUITE 1	9'6" x 6'3"
ENSUITE 2	8'9" x 6'
BALCONY 1	9'6" x 6'
BALCONY 2	9'3" x 6'
STUDY	14'1" x 7'



**KEY**  
C - Cupboard

**Disclaimer:** Please note floor plans are for marketing purposes only and measurements may be approximate.

*a place to call home*

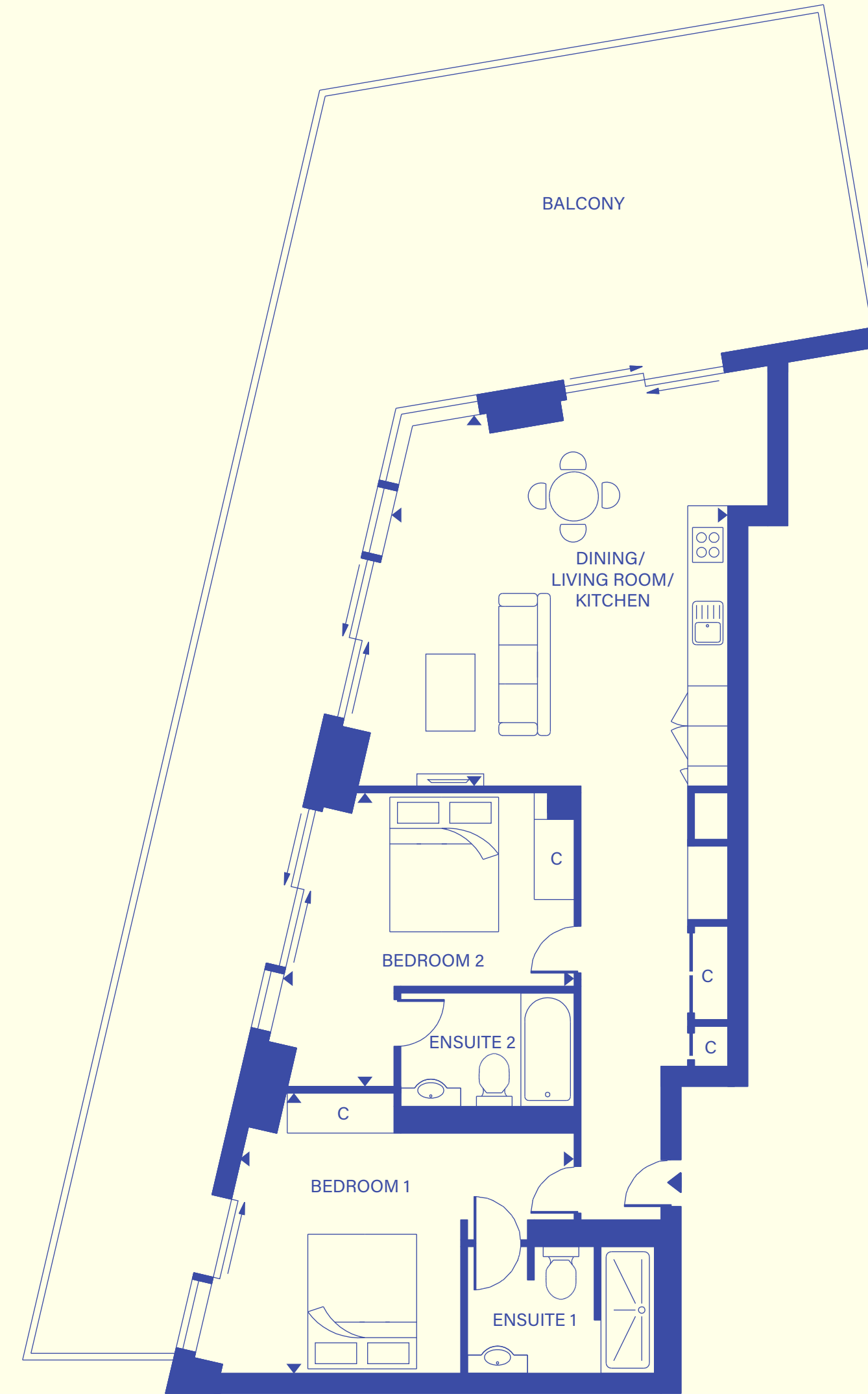


# 2 bedroom apartment

## TYPE 18

*Total Area* *956 sq ft*

LIVING/ DINING ROOM/ KITCHEN	18'1" x 16'6"
BEDROOM 1	16'9" x 13'9"
BEDROOM 2	14'6" x 14'6"
ENSUITE 1	9'3" x 6'3"
ENSUITE 2	8'6" x 5'6"
BALCONY 1	28'9" x 15'9"



**KEY**  
C - Cupboard

**Disclaimer:** Please note floor plans are for marketing purposes only and measurements may be approximate.

*a place to call home*

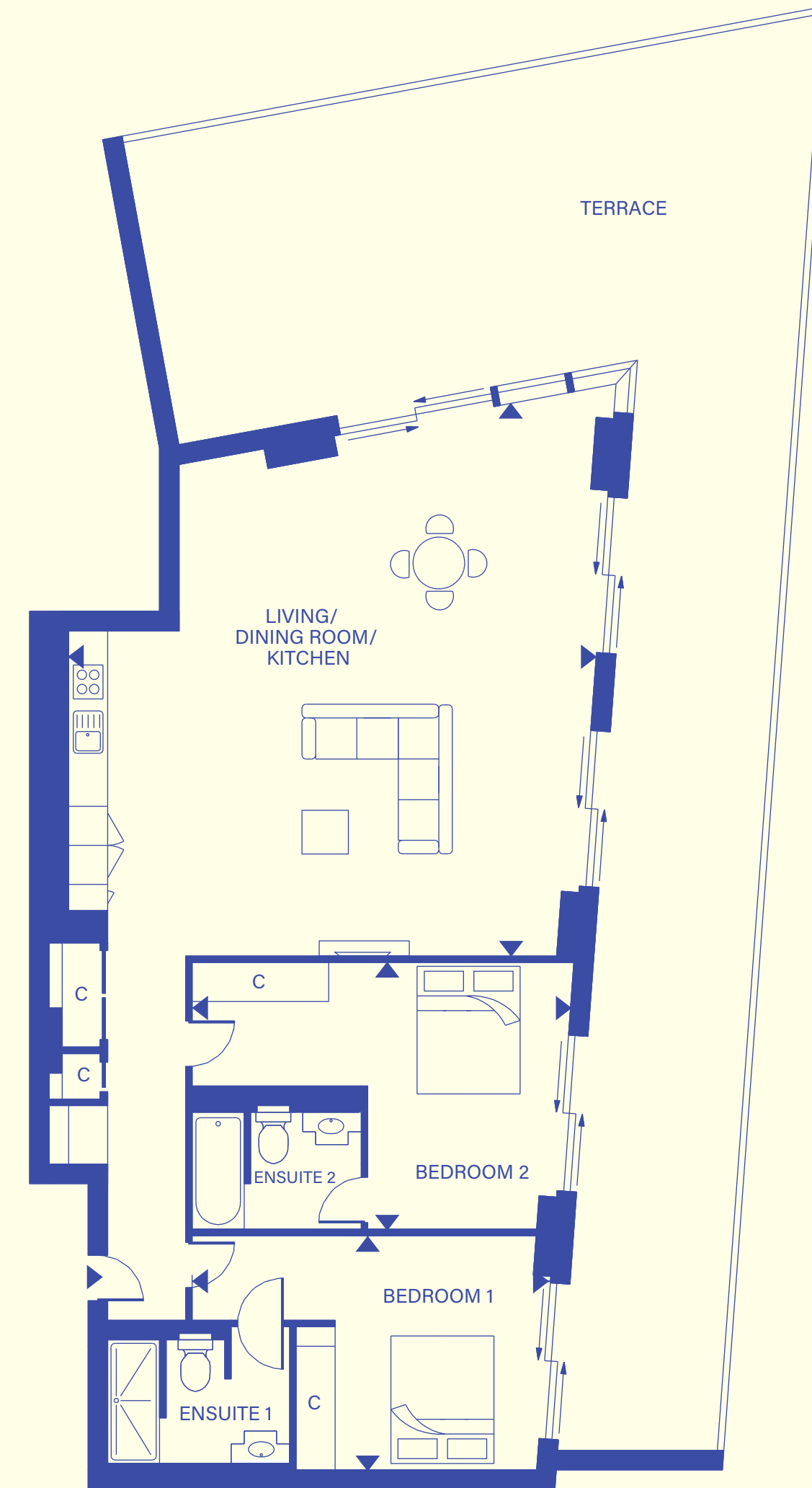


# 2 bedroom apartment

## TYPE 19

*Total Area* *1,267 sq ft*

LIVING/ DINING ROOM/ KITCHEN	28' x 26'6"
BEDROOM 1	18'1" x 11'9"
BEDROOM 2	19' x 13'6"
ENSUITE 1	9'3" x 7'
ENSUITE 1	8'6" x 6'
TERRACE	71'3" x 34'1"



**KEY**  
C - Cupboard

**Disclaimer:** Please note floor plans are for marketing purposes only and measurements may be approximate.

*a place to call home*